

# Versatile flooring solutions for engineering and manufacturing

## what can resin do for you??

Even in the most arduous environments there are options to meet the challenging demands for Engineering & Manufacturing floors. Needing to accommodate busy and heavy-duty forklift truck traffic, be resistant to impact, abrasion, chemical and heat damage, The normal choice of floor for this sector, is a heavy-duty polyurethane RT or HF screed, either 6mm or 9mm thick.

All options are totally impervious and if required, anti-slip safety flooring can be applied to high traffic pedestrian areas such as gangways and loading areas.

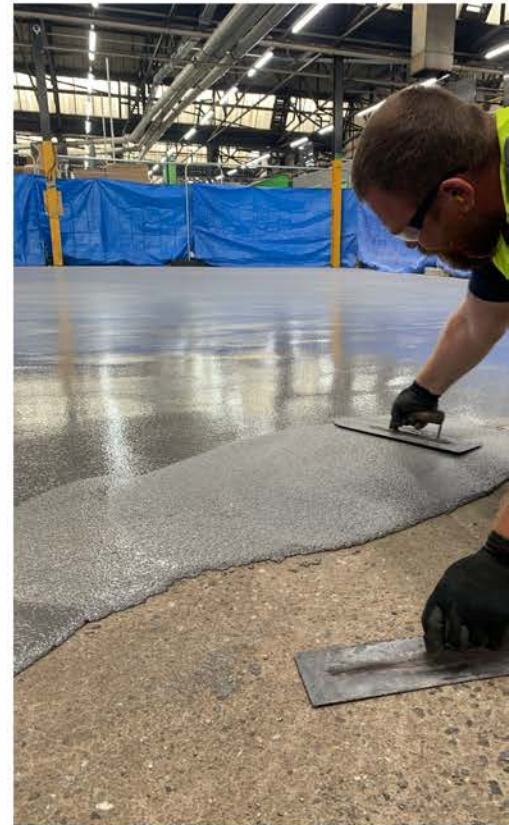
- Impact resistant
- Easily cleanable
- Very hard wearing
- Chemically Resistant
- Can be laid to falls to help drainage
- Anti-slip in wet and dry working conditions

## resin floor systems

delivered on time, on budget and on spec

### Hard-wearing and robust

Heavy-duty polyurethane RT and HF screeds are extremely hard wearing and robust, even in the most arduous environments. Being constantly subject to busy and heavy-duty forklift truck traffic as well as foot traffic, Polyurethane RT and HR resin screeds are perfect for Engineering & Manufacturing floors as they are categorised by FeFRA as a type 8 floor which is the highest rating resin floor finish.



### Anti-slip

Polyurethane RT and HF screeds offer the maximum anti slip properties making them ideal for Engineering & Manufacturing floors. Slip resistant in both wet and dry conditions, Polyurethane RT and HF screeds offer the maximum anti slip.

### Chemical resistant

Engineering & Manufacturing floors can be subject to spillages such as grease, oil or fuel. With Polyurethane RT and HF screed Floors, spillages will remain on the surface until cleaned, once removed it will not leave a mark on the floor.

### Heat resistant

Due to large machinery engineering floors can be subject to extremes of heat, so any floor must be thermal shock resistant. Polyurethane screed floors are very durable and offer excellent thermal protection and can withstand direct temperatures up to 120 degrees.

### Easy to Clean

Polyurethane RT and HF Screed floors as easily cleanable with the use of an industrial scrubber-dryer together with the appropriate cleaning product.



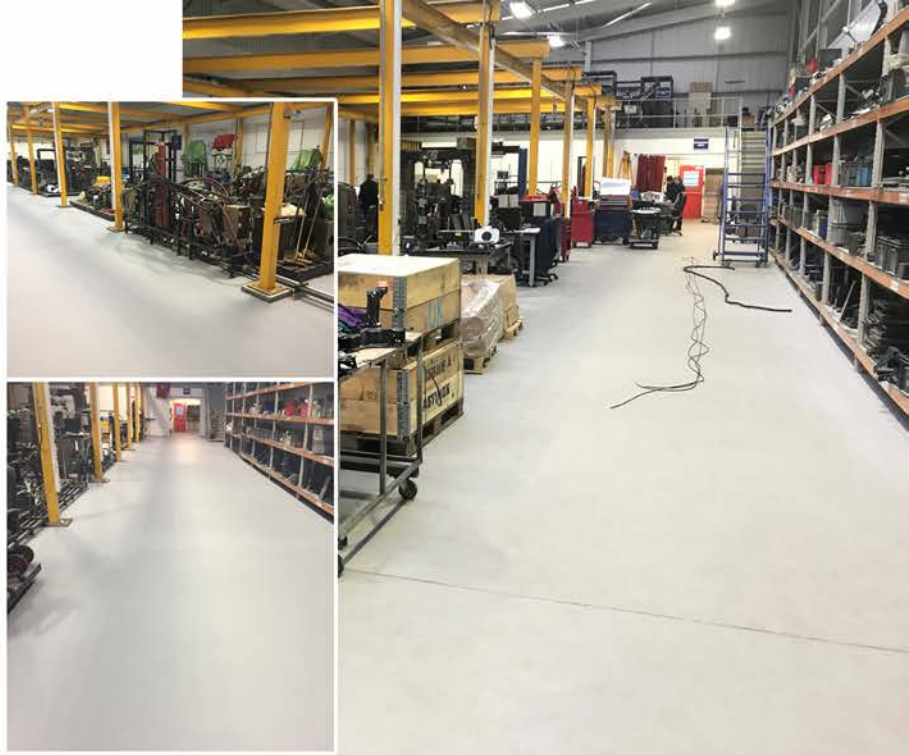
# Gestamp Tallent Ltd

Automotive components

## 511 SQM Test Lab Floor - Co. Durham

The existing concrete floors in the Test lab were shot blasted clean and repairs were made to any areas of damaged concrete using epoxy mortar compound. To seal the floor one coat of Resdev Pumaprime damp proof epoxy resin primer was laid to the whole area.

A nominal 6mm heavy duty Resdev Pumadur polyurethane screed was applied by trowel, in the clients chosen mid grey. To complete the refurbishment a 6mm x 6mm channel was saw cut to the expansion joints and infilled with joining compound. The work was carried out in just one week, completed on time and in budget.



## 1096 SQM gangways & walkways - Fareham

The existing concrete floors were shot blasted clean, repairs were made to damaged concrete as required using epoxy mortar compound and then one coat of Resdev Pumaprime damp proof epoxy resin primer was laid.

A nominal 6mm heavy duty Resdev Pumadur polyurethane screed was applied by trowel, in the clients chosen Chelsea blue to gangways and safety yellow to walkways. To complete the refurbishment a 6mm x 6mm channel was saw cut to the expansion joints and infilled with joining compound.

The work was carried out in just two weeks, during a shutdown period.

# Kennametal Manufacturing UK Ltd

Metal Tool Manufacturer - Newport  
400sq mtrs

The extremely dirty concrete floor was first shot blasted clean and then one coat of epoxy primer primer was laid. The floor was then thoroughly repaired and then followed by the 6mm heavy duty, polyurethane floor screed, dark grey and red around the furnaces. All expansion joints were then mirrored through the resin screed and infilled with matching joining compound. The resin flooring project was completed in 6 working days.

