



The Future of Industrial Resin Flooring

Pumadur[®]

Specialist Polyurethane Flooring Systems



Polyurethane Flooring Systems



Resdev's **Pumadur** range of high performance polyurethane flooring is designed to exceed the ever changing needs of both the industrial and commercial markets for seamless, hygienic and safe flooring.

In an extensive colour choice encompassing specific requirements including strength, slip and chemical resistance, Pumadur Polyurethane Flooring Systems provide the ideal solution.

From coatings and coving products through to self-levelling and heavy duty systems incorporating specialised graded aggregate and fillers, Resdev can provide strong flooring solutions for practical and prestigious installations alike.



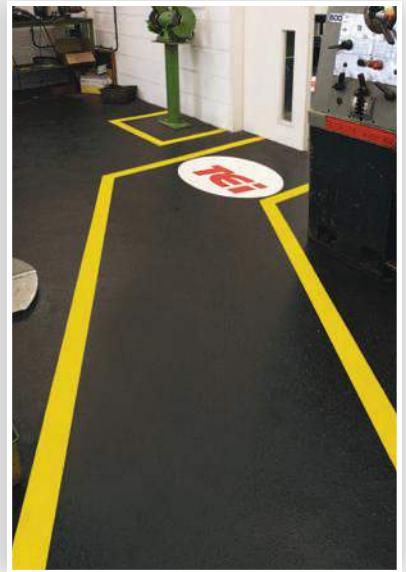


Typical Installations are:

- Chemical Processing & Storage
- Food Processing & Manufacture
- Pharmaceutical
- Healthcare
- Cold Storage/Freezers
- Breweries
- Printing
- Heavy Duty Traffic, Plant Vehicle Areas
- Engineering Process Areas
- Production & Warehousing
- Showrooms
- Toilets and Washroom Areas
- Food Preparation Areas
- Laboratories
- Dairy Clean Areas
- Storage Areas
- Plant Rooms
- General Engineering
- Dust-Proofing
- Line Marking/Safety Signage

Pumatadur[®]

Heavy Duty Polyurethane Flooring



Pumadur HF/Pumadur RT

The **Pumadur** range of heavy duty polyurethane flooring systems from Resdev are manufactured to comply with the exacting specification for a completely non-porous seamless surface designed to provide excellent resistance to abrasion, chemical attack and other forms of physical aggression including thermal shock from excessive heat up to 120°C.

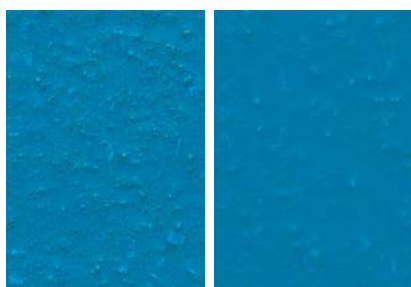
Pumadur HF and **Pumadur RT** water-dispersed heavy duty polyurethane floor systems, with graded silica aggregates give a lightly textured profile and matt surface.

Pumadur RT may be used without a primer on substrates with low porosity as it is resin-rich to enable absorption into the sub-floor.

Pumadur HF and **Pumadur RT** can also withstand the rigours of pressure washing and steam cleaning at a thickness of 9mm.

Pumadur[®] HF/RT

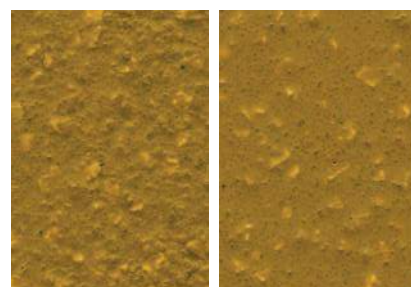
Colour Chart



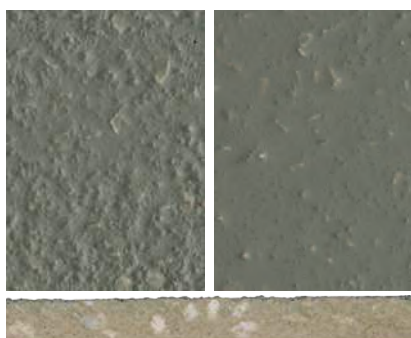
Chelsea Blue



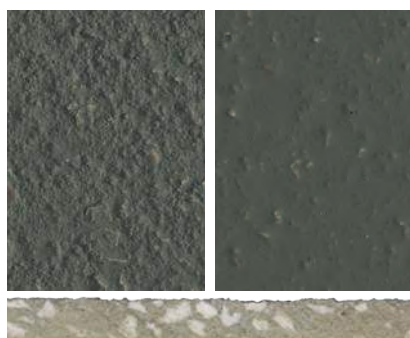
Red



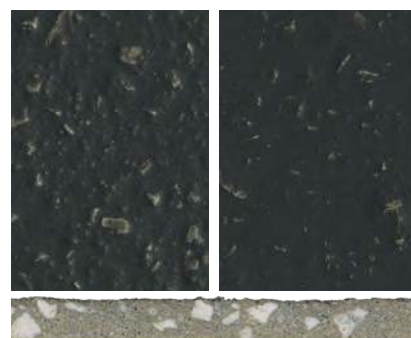
Sahara



Mid Grey



Dark Grey



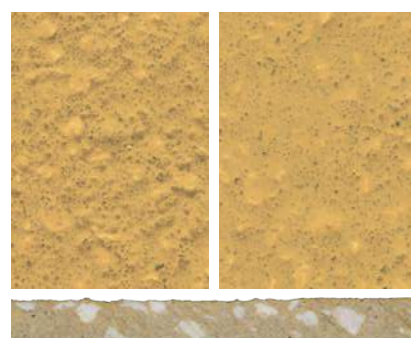
Charcoal



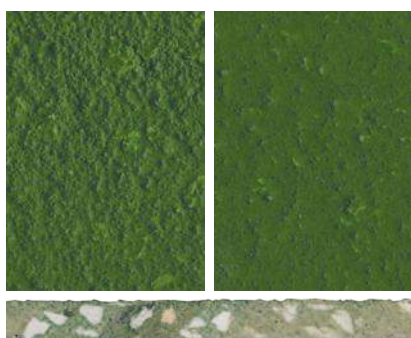
Buff



Safety Yellow



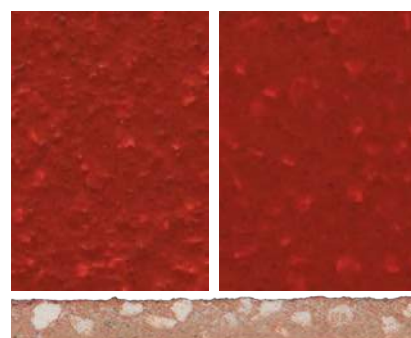
Yellow



Green



Brown



Safety Red

Some colours in some systems can be affected by UV light over time. Non standard colours are available on request. The colours shown may differ from the original product due to reprographic and technological media variations. The same colour in different products may also vary due to the composition and texture of the final finish. If colour and final aesthetics are of concern, please contact us to request an actual sample of the colour and system required.



Flow Applied/Self Levelling Flooring

Pumadur MD/Pumadur SL

Resdev's medium duty flow-applied/self levelling flooring systems are smooth, and attractive as well as offering excellent wear resistance, good cleanability and abrasion qualities.

Pumadur MD is a flow applied system based upon polyurethane technology with a high order of durability, resistance to abrasion, impact, chemical attack and penetration. Its smooth matt finish is the ideal partner for the rigours of heavy duty environments.

Pumadur SL is a durable self-levelling polyurethane flooring system ensuring a smooth matt finish with excellent resistances to abrasion and chemical attack.



Colour Chart



Chelsea Blue



Red



Sahara



Mid Grey



Dark Grey



Charcoal



Buff



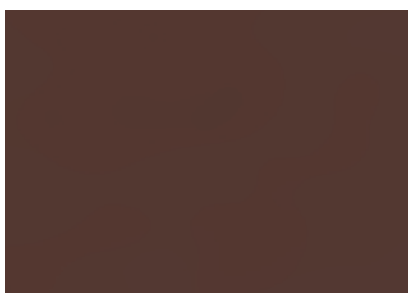
Safety Yellow



Yellow



Green



Brown



Safety Red

Coating, Coving & Wall Render

Pumadur TF/Pumadur CG/ Pumadur WR

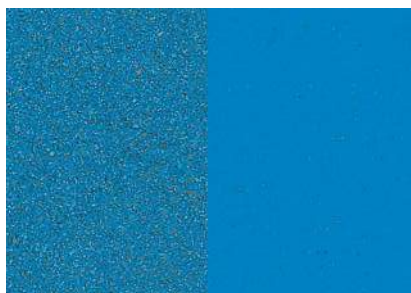
Resdev's fully comprehensive range of high performance, polyurethane coating, coving and wall renders are recommended for use in a broad selection of environments.

Pumadur TF is a solvent free high build coating, giving high quality levels of resistance to abrasion, chemical attack and other forms of physical aggression. The smooth finish is available in a selection of matt colours.

Pumadur CG coving grade and **Pumadur WR** coving/wall render are designed specifically for use with Pumadur Polyurethane Flooring Systems in order to maintain the same standards of resistance to abrasion and chemical contact when used in conjunction with Pumadur TF. This will give a totally seamless 'box' finish floor and wall system for high hygiene sterile process, bund and tanked areas.



Colour Chart



Chelsea Blue



Red



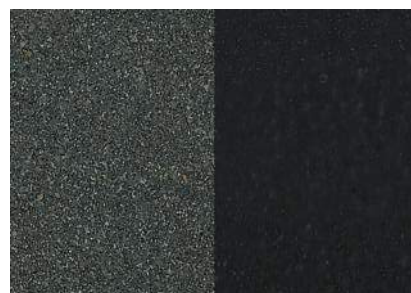
Sahara



Mid Grey



Dark Grey



Charcoal



Buff



Safety Yellow



Yellow



Green



Brown



Safety Red

Flooring Guide

Product	Nominal Thickness (mm)	Appearance Surface Finish	Durability Rating	Chemical Resistance Rating	Temperature Tolerance (max °C)	Slip Resistance Rating (SRV)		Antistatic Pumantistat Grade BS2050	BS 8204 Part 6 & Ferfa Classification	Application Technique
						WET	DRY			
Pumadur HF	6 - 9	White flint mottled profiled matt surface	5	5	120 (9mm) 95 (6mm)	55/60	75/80	A	8	Trowel
Pumadur RT	6 - 9	White flint mottled profiled matt surface	5	5	120 (9mm) 95 (6mm)	55/60	75/80	X	8	Rake and trowel
Pumadur MD	4 - 6	Flat even matt surface	5	5	75 (6mm) 60 (4mm)	N/A	60/65	X	7	Spread and Spiked Roller
Pumadur SL	2 - 3	Flat even matt surface	3	3	50	N/A	60/65	A	5	Spread and Spiked Roller
Pumadur TF 2 coats	0.3	Roller applied matt/silk surface	1	1	N/A	N/A	50/55	X	2	Roller or brush
Pumadur CG When coated with Pumadur TF (2 coats)	4 - 6	Flat trowelled aggregate finish	5	5	80	N/A	N/A	X	N/A	Trowel
Pumadur WR When coated with Pumadur TF (2 coats)	4 - 6	Flat trowelled aggregate finish	5	5	80	N/A	N/A	X	N/A	Trowel

The durability slip & chemical resistance of a **Pumadur** Polyurethane Flooring System is directly proportional to the thickness applied and other factors including traffic, mechanical and chemical use, impact damage and housekeeping practices. Protection is offered against a comprehensive range of chemicals though some highly aggressive chemicals may not be suitable in higher percentage strengths.

Durability

- 5 – Heavy traffic from wheeled vehicles, chemical spillage & a constant cleaning regime
- 4 – Heavy traffic from wheeled vehicles & occasional chemical spillage which is cleaned up quickly.
- 3 – Medium duty traffic from rubber wheeled vehicles, constant foot traffic & occasional chemical spillage which is cleaned up quickly.
- 2 – Light to medium duty traffic from rubber wheeled vehicles, regular foot traffic & no chemicals, impact or abrasion from grit etc.
- 1 – Light duty traffic from pedestrians & no chemicals, impact or abrasion from grit etc.

Chemical Resistance

- 5 – Constant chemical spillage, wet processing and constant detergent cleaning
- 3 – Occasional mild chemical spillage and constant cleaning.
- 1 – Not recommended for protection against chemical attack but will withstand occasional spillage which is immediately cleaned up.

Antistatic Pumantistat Grade BS2050

A – Available X – Not available

The **Pumadur** range of polyurethane flooring systems can be applied to a wide variety of substrates including concrete and grano concrete and is resistant to chemical attack including:

- organic and inorganic acids
- alkalis
- fuel
- hydraulic oil
- aromatic and aliphatic solvents
- other forms of physical aggression

Resdev is a founder member of FeRFA, The Resin Flooring Association and the product types are given in accordance with BS 8204 Part 6 and comply with the standards set by the association. Products are categorised into 8 types to represent a class of properties and durability of flooring finish. The different types are appropriate for use in different applications to ensure the best solution every time.

In order to comply with the exacting requirements of the export market, all products and systems manufactured by Resdev conform to BS EN 13813:2002(3) meeting the Directive of European Standards for in-situ flooring products including screed material & floor screed.

The technical and specification data provided is given as a guide and additional specification and material safety data is available upon request. This is assisted by Resdev's Technical Support Team giving direct access to specialist advice. Working closely with the flooring contractor our aim is to ensure that each customer is completely satisfied at every stage of the project, interacting with all parties involved to select and install correctly specified floor systems, and including an established after-sales support structure which is second to none.



Pumadur[®]



The Future of Industrial Resin Flooring

Pumaflor House, Ainleys Industrial Estate, Elland, West Yorkshire, HX5 9JP, England
tel: +44 (0) 1422 379131 fax: +44 (0) 1422 370943
info@resdev.co.uk www.resdev.co.uk
Registration Number: 1392506